



Delhi Metropolitan Education

Affiliated to GGSIP University, New Delhi & Approved by Bar Council of India



Distinctive Practice

Naye SOCH – Naye DISHA



Delhi Metropolitan Education

Affiliated to GGSIP University, New Delhi & Approved by Bar Council of India



Naye SOCH – Naye DISHA

DME's Vision as an Education Provider: “To nurture an inspirational setting and a global standard of learning for students that enables their intellectual, social and personal transformation into future leaders for the benefit of the nation.” Keeping this thought and to fulfil the vision, School Outreach Cell for Higher-education [SOCH] was established in 2017, with an objective of spreading awareness in significant areas [Career Guidance after class 10th and 12th, IPR Awareness, Entrepreneurial Mindset, Cyber Security and Mental Wellbeing] beyond the college walls. These sessions are focussed on **the school students class 6th onwards** to enable their intellectual, social, and personal transformation into confident individuals and capable future leaders.



The name SOCH [**Thinking, विचार, मनन,**] symbolizes the change in thinking process of students at an early and impressionable age. SOCH has always been at the forefront by helping the school ecosystem by conducting series of **hands-on workshops, awareness sessions, trainings, and panel discussions** in above mentioned important areas of learning.



Need to Initiate SOCH

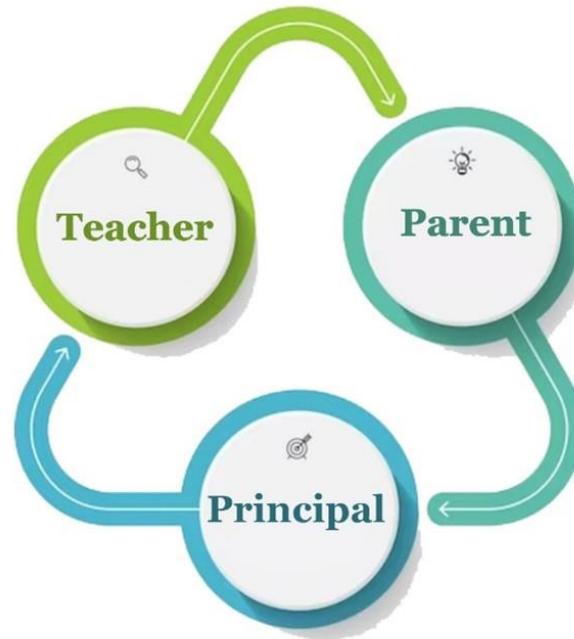


When school students joined DME in various courses the faculty members used to commonly observe that students are having:

- Knowledge confined to class 11-12th
- Focused on short term goal of suitable Board Exam Percentage. No aim beyond that.
- Living under tremendous social and parental pressure to perform well in academics. Plentiful bottled-up feelings and devoid of avenue to talk/share/ seek help from.
- Aware of limited career options and making career choices based on false information and assumptions.
- Choosing higher education courses based on parental wishes/pressure but dissatisfied from within and feeling unfit in that domain.



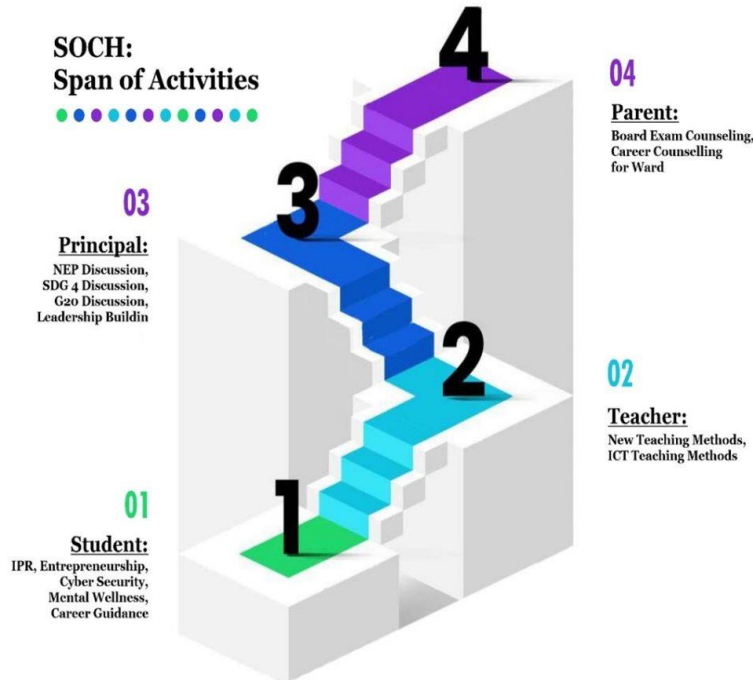
School Student Ecosystem



School students alone cannot be hand-held and expected to get transformed unless the whole **School Ecosystem** was taken into consideration. Hence SOCH was built to hand-hold of the ecosystem from where a school student was coming from.



OBJECTIVE AND SPAN OF ACTIVITIES



- To take **school** students beyond the defined curriculum and expand horizons of their real-world knowledge on key areas related to Entrepreneurship Development, IPR Awareness, Mental Health Wellbeing, and Cyber Security Awareness.
- To educate **students and parents** about domain/career/higher education choices after 10th-12th to make an informed decision based on student skills/personality traits and ease out pressure on young minds.
- To actively involve **school** teachers to train them in new teaching methods, ICT enabled teaching methods etc.
- To involve **school principals** in leadership capacity building and collective discussion on important aspects in Academics, Skill Building, NEP, G20, SDG's etc pertinent areas.



Case Study of Success Stories of SOCH:



Case One: Building Entrepreneurial Mindset

Idea Generation Activities like SCAMPER conducted class 6th onwards for Re-instilling creativity and Ideation towards business orientation and making students think about having their own business. Conducting Entrepreneurial mindset Activities like Prototype Building within limited resources for 9th -12th class students. This mindset makes youth less job dependent and more startup oriented thereby helping in achieve Make in India dream come true.



DME Delhi Metropolitan Education
Affiliated to GGSIPU, New Delhi & Approved by Bar Council of India

Sarvottam International School
Greater Noida

Outreach Workshop

Who has the rights over my Instagram Reel: Understanding Elementary Intellectual Property Rights

5 February 2022 | 0830 Hrs

Meeting ID: 244 606 9005
Passcode: dme_1

Contact: webinar@dme.ac.in
www.dmenoida.com

Resource Person:

Ms Shambhavi Mishra
Assistant Professor
DME Law School

Delhi Metropolitan Education
B 12, Sector 62, Noida
Tel.: 99289 81132, 97178 91112
www.dme.ac.in

Sarvottam International School
Plot No. 6, Indraprastha IX, Greater Noida West,
Uttar Pradesh 201306
91 999600335, +91 999688336

Case Two: IPR Awareness

Students start using social media at an early age etc and start posting personal contents/ reels. Students were made aware about basic of IPR to understand Copyright issues related to content posted. Several such workshops Online and Offline mode were conducted. Students will now be cautious while posting contents and understand the content ownership and its outcomes.



Case Three: Cyber Security Awareness

Workshops were taken to make students understand the cons of playing Cybercrime games like Blue Whale Challenge and find out if any student is trapped in this challenge. Immediate guidance was provided to get rid of such games and never to indulge in cyber world without fully understanding the pros-cons of the same.



Case Four: Mental and Emotional Health during Pandemic

Webinar on Socio-Emotional Health of students during a pandemic Speaker: Ms. Jigyasa Tandon, Mental Health Professional, Educationist & Advocate. Workshops in collaboration with Meraki, the mental health society at DME organized a session on 'Socio-Emotional Health of students during pandemic' by Ms. Jigyasa Tandon (Mental Health Professional Educationist). Students from 10+ schools from Delhi-NCR participated.



Delhi Metropolitan Education

Affiliated to GGSIP University, New Delhi & Approved by Bar Council of India



GURU GOBIND SINGH
INDRAPRASTHA UNIVERSITY

DME Delhi Metropolitan Education
Affiliated to GGSIP University, New Delhi & Approved by Bar Council of India

in collaboration with
Sun Valley International School, Vaishali, Ghaziabad

Introduction by:
Mrs. Preeti Goel
Principal,
Sun Valley International School

Resource Person:
Prof. (Dr.) Ravi Kant Swami
Director,
Delhi Metropolitan Education

**Choosing Stream after 10th:
Taking an Informed Decision**

18 May 2021 | 1000 Hrs

Meeting ID: 915 6854 9178
Passcode: dme

Contact: webinar@dme.ac.in

Delhi Metropolitan Education
B-12, Sector 62, Noida
Tel: 89209 81152, 79426 47516
www.dme.ac.in

Sun Valley International School, Ghazabad
A - 1, Sector - 1, Vaishali, Ghazabad (U.P)
Tel: 0120-4151431, 22,33, 981054298
Email: sunvalleyinternational07@gmail.com

DME Delhi Metropolitan Education
Affiliated to GGSIPU, New Delhi & Approved by Bar Council of India

**Ramagya School
Noida**

Career Counselling Session

**Choosing Stream after 10th:
Taking an informed decision**

11 February 2022 | 1315 Hrs

Meeting ID: 915 6854 9178
Passcode: dme

Contact: webinar@dme.ac.in

Resource Person:
Dr. Shalini Gautam
Associate Professor
Head- Outreach
Delhi Metropolitan Education

Delhi Metropolitan Education
B-12, Sector 62, Noida
Tel: 89209 81152, 97179 91112
www.dme.ac.in

Ramagya School
E-7, E Block, Sector 50, Noida,
Phone: +91-8810333355
Email: admissions@ramagyaschool.com

Case Five: Domain choice after Class 10th

Confusion in Domain choice after 10th and parental pressure Students and parents were made aware in series of career counselling sessions online and offline to guide about choice of domain as per student skills and personality type.

DME Delhi Metropolitan Education
Affiliated to GGSIP University, New Delhi & Approved by Bar Council of India

MANAGEMENT • LAW • JOURNALISM

DME Career Development Series

**Careers in the Management
arena in the post COVID
scenario**

Date: Tuesday, 9 June, 2020
Time: 11:30 AM
Platform: Zoom Meet
Contact: webinar@dme.ac.in

Prof. (Dr.) Madhulika Koushik
• Pro Vice Chancellor of Usha Martin University,
Raichur
• Former Higher Education Specialist,
Commonwealth of Learning, Vancouver, Canada

Moderator:
Prof. (Dr.) Ravikant Swami
Dean, DME Management School

Prof. (Dr.) Sanjiv Mittal
Professor
USHS, GGSIPU

Prof. (Dr.) Pankaj Singh
Professor at Faculty of Management
Studies, University of Delhi

B-12, Sector-62, Noida (U.P.)

Zoom Meeting

Career Scope

- B.A.LL.B.(Integrated)
- B.B.A.LL.B (Integrated)
- Bachelor of Arts (Journalism & Mass Communication)
- Bachelor of Business Administration (BBA)
- Bachelor of Hotel Management & Catering Technology (BHMCT)
- Bachelor of Technology (B.Tech)
- Bachelor of Architecture (B. Arch.)
- Bachelor of Pharmacy (B. Pharm.)
- Bachelor of Science in Nursing

Participants: Aditi Gaur, DELHI METROP...

Case Six: Higher Education Options after Class 12th

Confusion in Higher Education choice after 12th and peer pressure students were made aware in series of career counselling sessions online and offline to guide about choice higher education options for every stream.



Delhi Metropolitan Education

Affiliated to GGSIP University, New Delhi & Approved by Bar Council of India



GURU GOBIND SINGH
INDRAPRASTHA UNIVERSITY



DME Delhi Metropolitan Education
Affiliated to GGSIP University, New Delhi & Approved by Bar Council of India

in collaboration with
SBP DAV Centenary Public School, Fatehabad

Career Opportunities in Media

June 5 2021 | 1030 Hrs

zoom

Contact: webteam@dme.ac.in

Prof. (Dr.) Anshika Saxena
Professor and Dean, DME Media School
Director, DME Studies & Production
Delhi Metropolitan Education

Introduction by:
Ms Sunita Madaan
Principal, SBP DAV

Delhi Metropolitan Education
B 12, Sector 62, Noida
Tel: 097209 81157
www.dme.ac.in

SBP DAV Centenary Public School,
Bijhar Road, Fatehabad, HARYANA
Tel: 81667-787254, 231782, 8981800882
Email: davfatehabad89@gmail.com, sbpdavfb@gmail.com



Case Seven: Career Pathway in Media and Journalism

Stream neutral career options guidance for an informed decision to students. Workshops at DME Studio 62 on editing, photography etc were conducted for students to get fair idea about this stream and work aspects.



Case Ten: Competitive Exam Information

Students are unaware of what are the various competitive exams for undergraduate courses and what is the preparation syllabus. This information is provided by SOCH.



Guru Gobind Singh Indraprastha University (GGSIPU), Government of Delhi

Tagore International School New Delhi

Strategies to Crack CLAT & Career Pathways in Law

July 8 2021 | 13:30 Hrs

Prof. (Dr.) Ravi Kant Swami, Director, DME | Ms. Bedapriya Lahiri, Faculty, DME Law School

Contact: web@ia-cdn.ac.in

Delhi Metropolitan Education | Tagore International School | 110 005, India

Case Eleven: Training Legal Studies class 12th in Moot Court

Since the schools don't have Moot Court Setup and Legal Studies is a new stream introduced in class 12th DME initiated resource sharing and training to students who have opted for Legal Studies



Case Twelve: Business Plan Workshop and Competition

Post series of workshop conducted at various schools on Idea generation, prototype making, business plan building to test to what extent school students have instilled the entrepreneurial mindset a Business Plan Interschool Competition was conducted on the theme of Sustainable Entrepreneurship.



Delhi Metropolitan Education

Affiliated to GGSIP University, New Delhi & Approved by Bar Council of India



GURU GOBIND SINGH
INDRAPRASTHA UNIVERSITY



Case Thirteen: Panel Discussion and School Academic Leadership Capacity Building

On regular intervals, School principals are invited to have a Panel Discussion and Brainstorming sessions on topics like NEP, SDG's, Education in Pandemic Times, Vocational Training in Education, Skill building initiatives in school students. Resource challenges school is facing and to devise measures to support the principals by resource sharing and Training by SOCH.